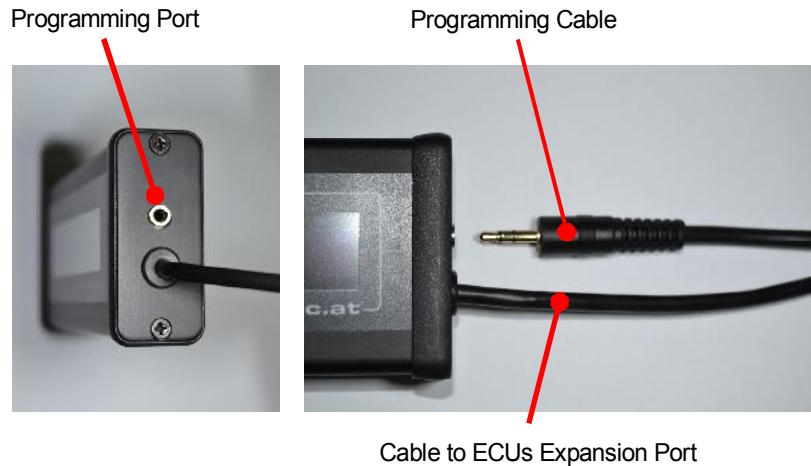
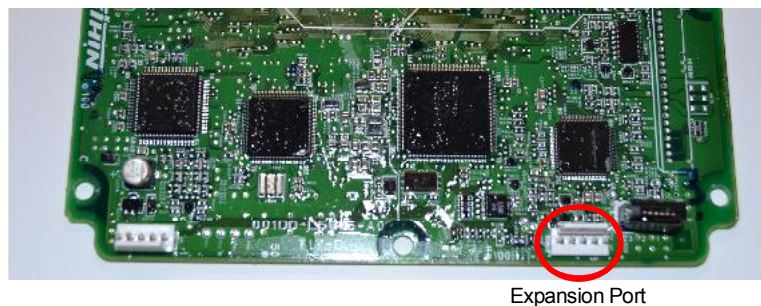


The Dot-Display is a 2x20 Digits Display in a robust aluminum case. It uses the newest OLED technology which makes it best readable even in the sunlight.



Connection to the ECU

Connect the Display to the ECUs or Expansion Box Expansion Port.



Install Setup Software

To configure the Display, you'll need the setup software. You can download from our website.

Just install the software package as any other program. It has a easy to use installer. Beside of the program it installs sample Configurations and Sensors under the user directory.

To connect the PC to the Display you need the Programming Cable which is included with the Display.

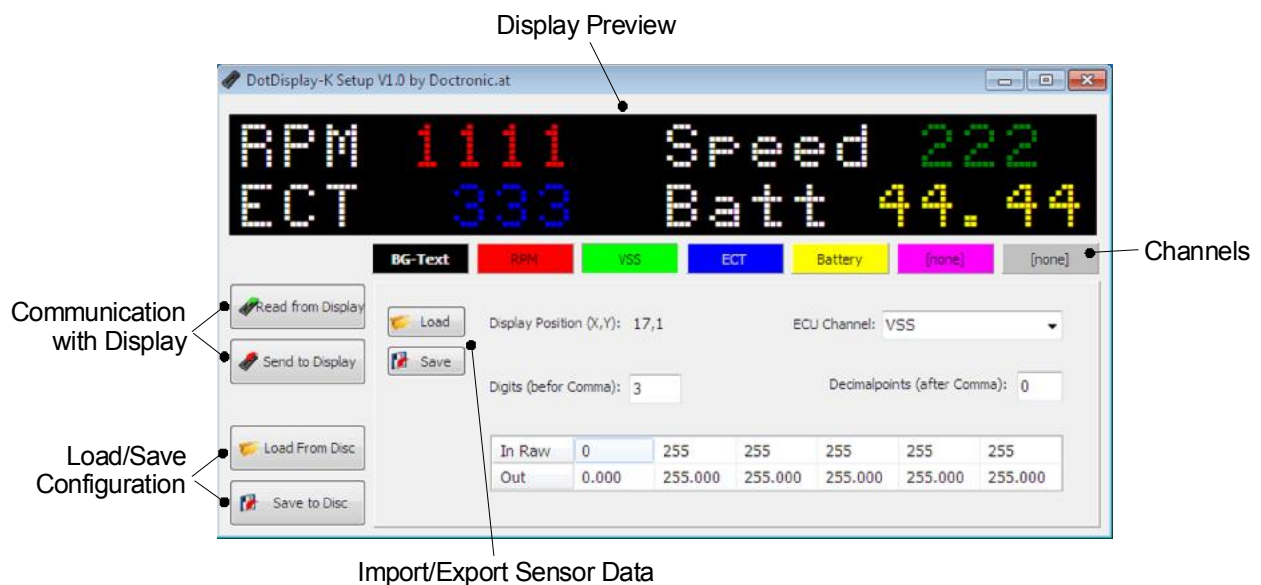
This Cable uses the same FTDI Device Driver (USB) as the ProECU-K Cable. If you don't have already installed the device driver, you need to do it before running the program.

USB-Driver

If your PC running Windows XP you need to install the USB drivers. We use the very popular FTDI Chipset in our product. You can download the USB driver from our site or direct from the chip manufactures site <http://www.ftdichip.com/Drivers/D2XX.htm>.

If your PC is running Windows 7, the drivers are already preinstalled. It could be possible that the driver is not active right now, when you never had a FTDI device connected to the PC. In this case, just connect the USB-Cable and wait for the driver being installed. If this still does not work, follow the instructions of Windows XP (above) and install the FTDI Driver "by hand".

The Setup Software



The Setup Software let you configure the Display as you want. It supports up to six (6) ECU Channels or Sensors. The editing of the BG-Text (static Text) and the positioning of the Sensors happens in a WYSIWYG Style Display Preview.

We have many sensors preconfigured, so you only need to import them from disc. If you use other sensors, you can program the sensor curve yourself. The "In Raw" values mean the raw value of the channel. Is the channel a AD Input, 0 = 0 Volts and 255 = 5 Volts.

The best workflow to setup a configuration is this:

1. Load a Configuration from disc, i.e. "EMPTY"
2. Edit "BG-Text", the static Text, like the Sensor Description and Units
3. Jump to a Channel Page and
 - Import the desired Sensor from Disc
 - Than click on the Display Preview and move its numbers with the cursor keys.
 - Repeat 3. for all Sensors you want.
4. Send the Setup to the Display (The Display has to be Powered On!)
 - Follow the instructions of the Program. The Display has to be power down after programming.